

String Bass

Commissioned by Central Air Defence Force Band (Hamamatsu, Japan)

Symphonic Dances

for Wind Ensemble

I. Renaissance Dances

Yosuke FUKUDA (2006)

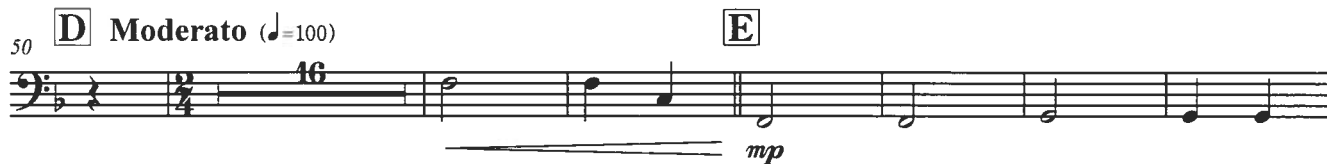
Andante Brillante (♩=76)



8 **A** Allegretto con moto ed elegante (♩=72)



25 **B** Poco meno mosso con grazia (♩=60)



String Bass

102 **G**
mf

111 *rit.*
f

118 **H** **Allegro Capriccioso** (♩=132)
pizz.
mp

134
mf

140 **I** **Allegro con moto** (♩=138)
pizz.
p

153

160 **J** *arco*
f

167 **K**
mf

174 **L**
f

181

188 *poco accel.* **M** **Tempo Primo** (♩=76)
ff

195 *allargando*
ff

String Bass

Commissioned by Central Air Defence Force Band (Hamamatsu, Japan)

Symphonic Dances

for Wind Ensemble

Yosuke FUKUDA (2006)

II. Tango

Allegro con moto ed anima (♩=138)

1 *pizz.* *p*

7 *pizz.* *sf* *pizz.* *p* *sf*

13 **A** *mp*

18 **B** *fz* *mp*

23 *mp* *mf*

28 **C**

33 **D** *fz* *mp*

38 *fz* *mp*

43 **E** *p* *arco* *p*

51 **F** *pizz.* *p* *p*

56

String Bass

60 *pizz.* **G**
mp *p*

64

68 **H**
8

I **Energico**
78 *arco*
f

82 *ff* *mf*

86 **J**

90 **K**
fz

95 *f*

101 **L** *pizz.*
ff *mp*

105

109 **M**

String Bass

113 *cresc.* *mf* *cresc.*

117 **N** *Agitato* *f*

121

125 *arco* **O** *ff*

129

134 **P** *sfz* *mf*

145 **Q** *mf*

150 **R** *fz* *mp*

155 *fz* *mp*

159 *arco* *molto rall.* *sf* *p*

String Bass


Symphonic Dances

for Wind Ensemble

IV. Spirituals Bon-Odori-Uta

Yosuke FUKUDA (2006)

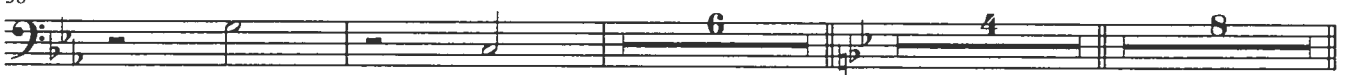
1 **Andante cantabile e religioso** (♩=46 / ♩=92) **A**
arco



11 **B**
pizz. arco


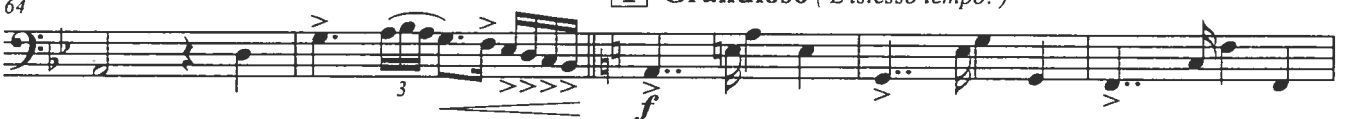
17 

24 **C** **D**


32 **E**
mf dim. 3 3 p pizz. pp


38 **F** **G**
Poco marcato **Cantabile**


58 **H** **Poco a poco marcato e mosso** (ma L'istesso tempo)
mp cresc.


64 **I** **Grandioso** (L'istesso tempo!)
f


69 **J** **K**
ff


75 **J** **Cantabile** **K** **smorzando al fine**
pizz. p


String Bass

Symphonic Dances

for Wind Ensemble

III. Hoedown

Yosuke FUKUDA (2006)

1 **Medium tempo in Swing** ($\text{♩} = 92$)

6 **Tempo ad lib. (Slowly)**

10 **A** **Medium tempo** (lightly - like Country & Western) ($\text{♩} = 92 \sim 100$) **B**

26 **C** **D**

40 *pizz.* **E**

53 *pizz.* **F** **Medium fast** ($\text{♩} = 104$)

58 **G**

63 *cresc.*

68 **H** **Faster** *arco*

73 **I** ($\text{♩} = 110 \sim 116$)

78 **J**

String Bass

88 *f*

92 **K** *gradually accel.*
p *cresc.*

97 **L** *Hurry Up!* (♩=120~) *ff*

102 *pizz.* **M** *f*

107

111 **N** *Riding!*

115

119 *cresc.*

Forcefully (and Gaily)
124 *ff* *ffz*